

Cuckmere Pathfinder Project

February 2011

Heritage Study

Klara Spandl

Oxford Archaeology



Introduction to OA and Team

Oxford Archaeology - one of the largest archaeological organisations in Europe (350 people) with many specialists



Gary Jones

Carl Champness



Neil Adam

Hannah Kennedy



Hugh Beamish



and Martin Bates
(Archaeology
South East)

Project Brief (ESCC)

- provide updated evidence for the historic environment of the Cuckmere Haven
- identify the extent and significance of all identified heritage assets
- identify areas of differing archaeological potential
- inform the options for the conservation and/or recording of heritage assets against a number of coastal change scenarios.

‘Heritage assets’ embraces all historic environment features, archaeological sites and historic structures whether designated or not and whether capable of designation or not.

Cuckmere
Haven
Heritage Asset
Plan East Sussex



January 2011
East Sussex
County Council



Client: East Sussex County Council

Issue No: 2
OA Job No: 4833

Report:

Methodology

Definition of Significance

Period summaries and context

Thematic studies

Attribution of Significance

Recommendations for further
work

Series of GIS maps of all
features, Historic Maps and
Photos

Detailed gazetteer

Methodology

- Aerial Photographs
- Historic Maps
- Secondary Sources
- Historic Environment Record
- National Monuments Record
- Walkover
- Conductivity Survey - map subsurface geomorphological features
- Resistivity Survey - examine the deeper sediment sequence
- Borehole survey - 27m - examine sequences



Results - Thematic Studies

Result section of report split into two main parts.

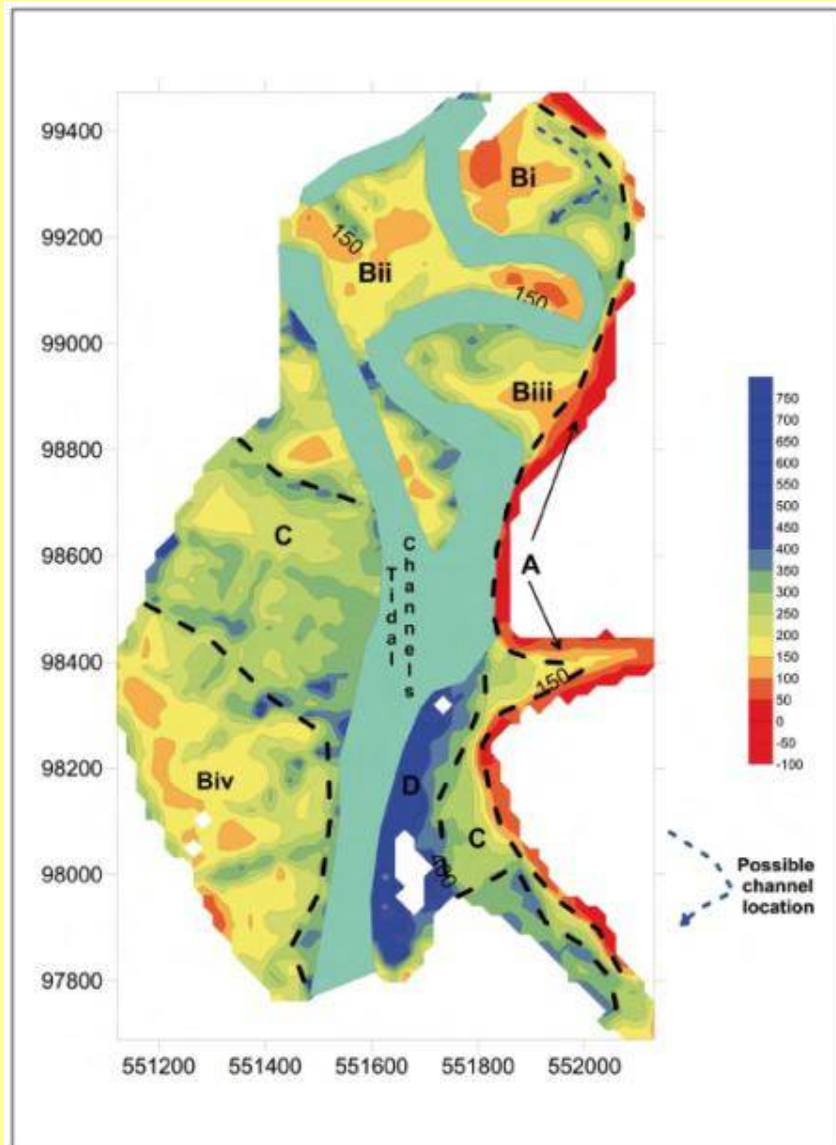
i Period Summaries

ii Thematic studies:

- Palaeo-environmental remains
- River and Coastal Changes
- Drainage and Reclamation
- Settlement, Farming and Landuse
- Military and Defence
- Communications and Recreation

Presentation looks at one or two key findings for each thematic study

Palaeo-environmental - historic topography



© Archaeology South-East		Cuckmere Estuary	
Project Ref: 4496	Sept 2010	Zones exhibiting different conductivity values	
Report Ref:	Drawn by MB	Fig. 2	

Figure 15a: Zones exhibiting different conductivity values.
(Archaeology South-East)

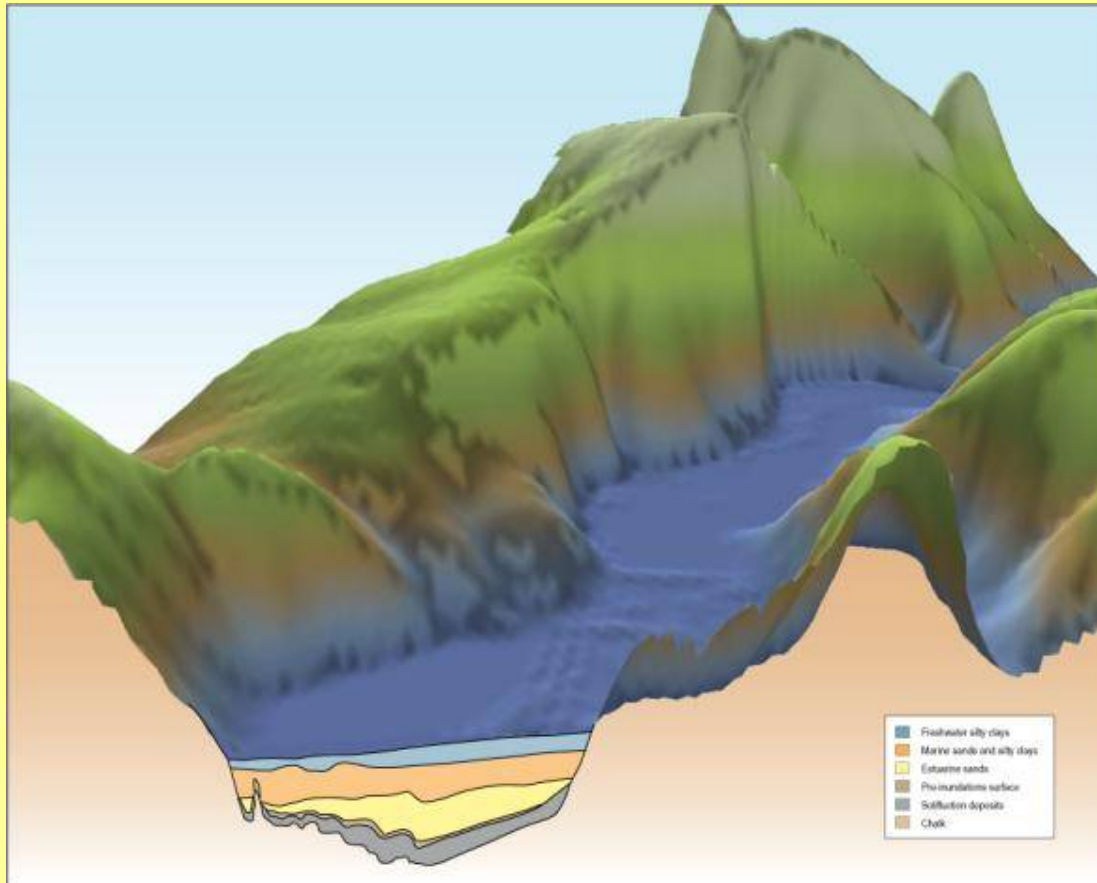
A - Outcrops of Chalk Bedrock -
edge of Valley - ?settlement

B - Buried channels - maybe boats
etc and Island Deposits
higher/dryer and more suitable for
?seasonal dry land activities

C - Fine sediments deposited from
inundation's

D - Active salt marsh

Palaeo-environmental - cross section



Bed rock - 27m bgl level

Holocene Land surface -
22m deep - wooded valley
bottom with freshwater
stream - Meso/Palaeolithic

Estuarine deposits -
deposited by floods and
inundation's

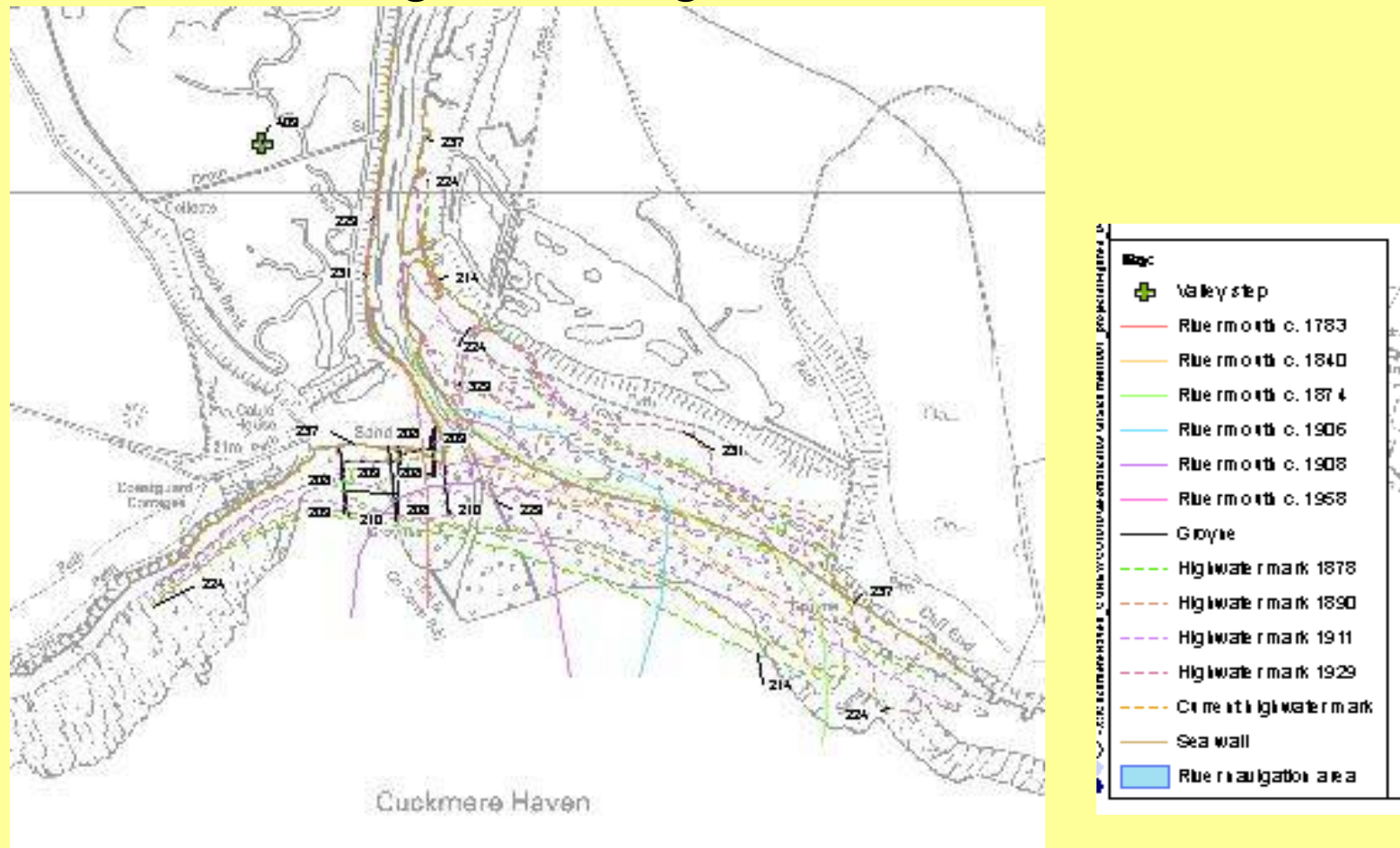
Some evidence of colluvial
deposits within sequence.

Reclamation

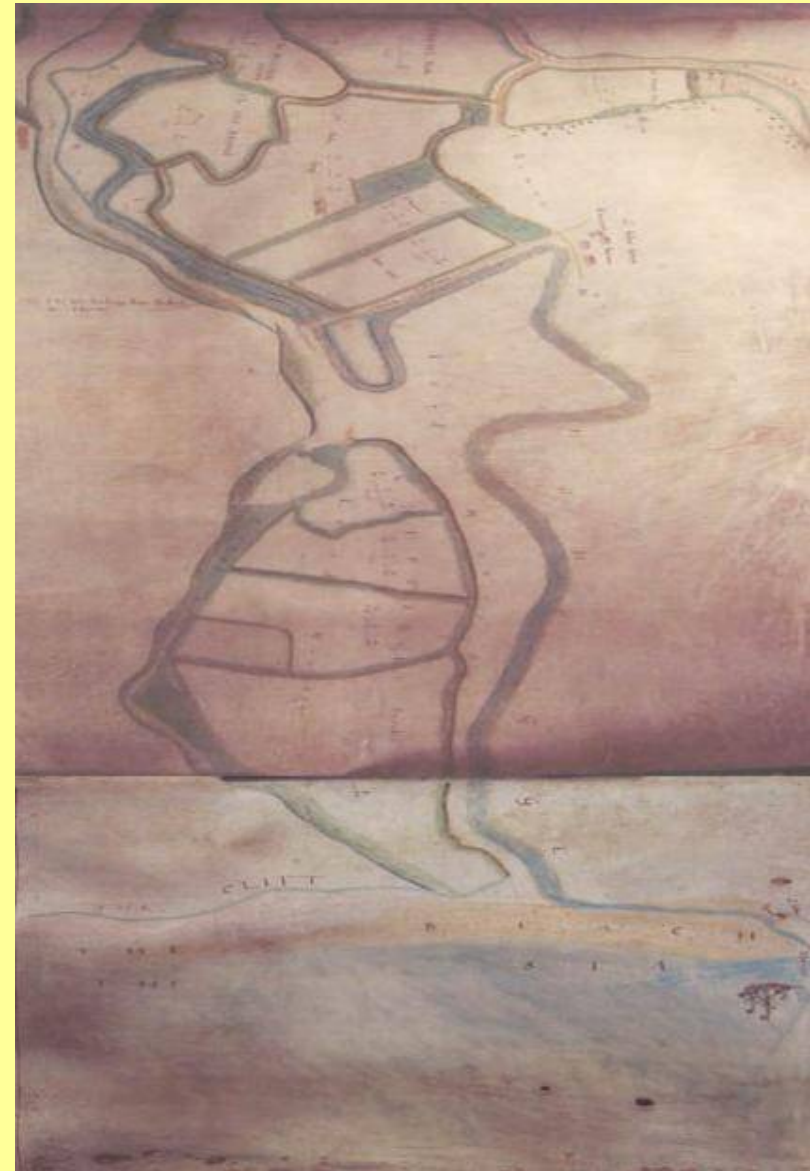
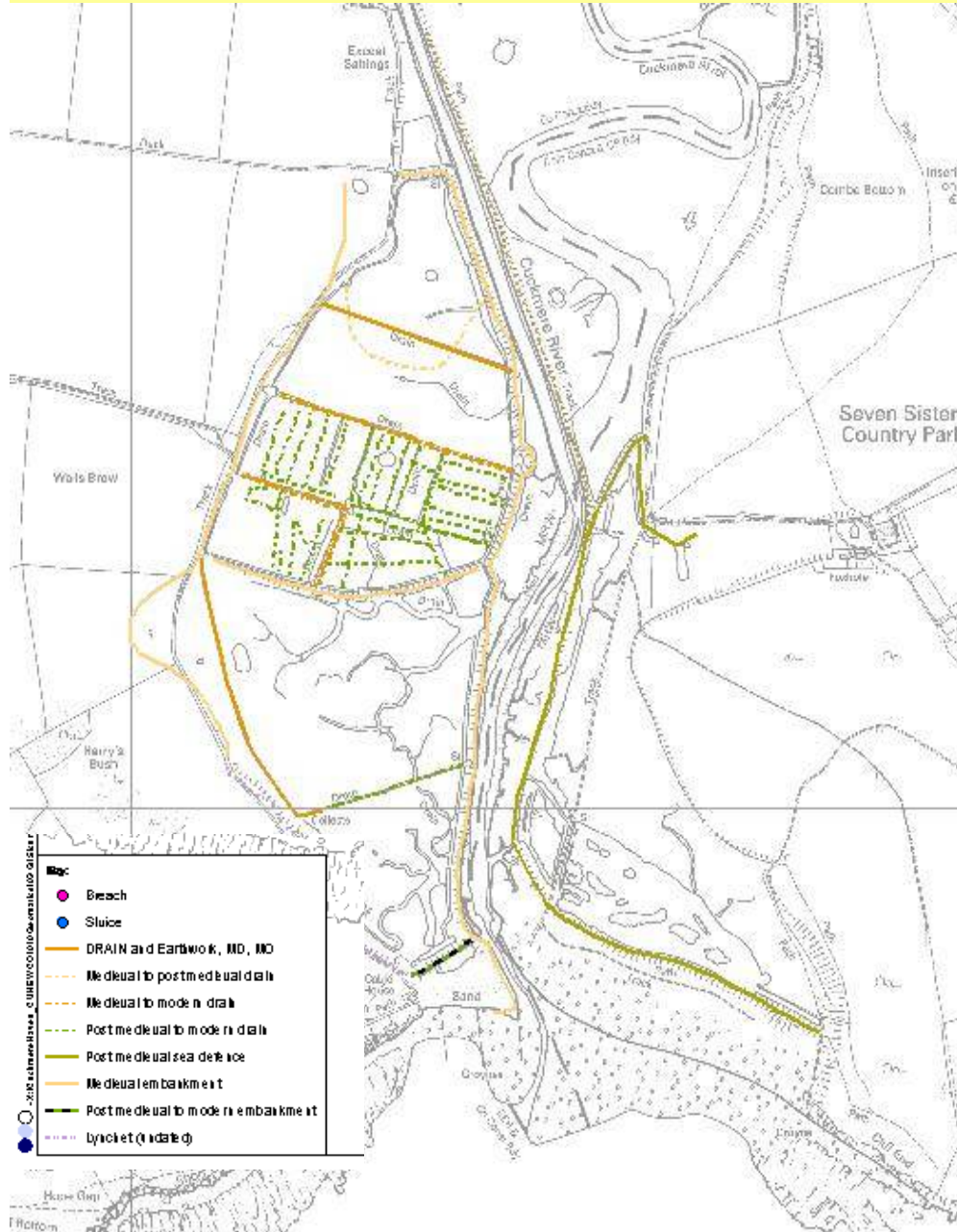
Interpretation - Mesolithic freshwater environment, then rising water levels created estuarine watery environment until ?medieval period when sea defences probably built and land reclaimed.

River and Coastal Changes

- Changes in highwater marks and course of river mouth
- Shifting shingle bars - even in 14th century using harbour ploughs
- New Cut 1846
- Historic map evidence shows that from 1878 to present coastline has moved 41.5 m nearer Coastguard Cottages



Drainage and Reclamation - western half

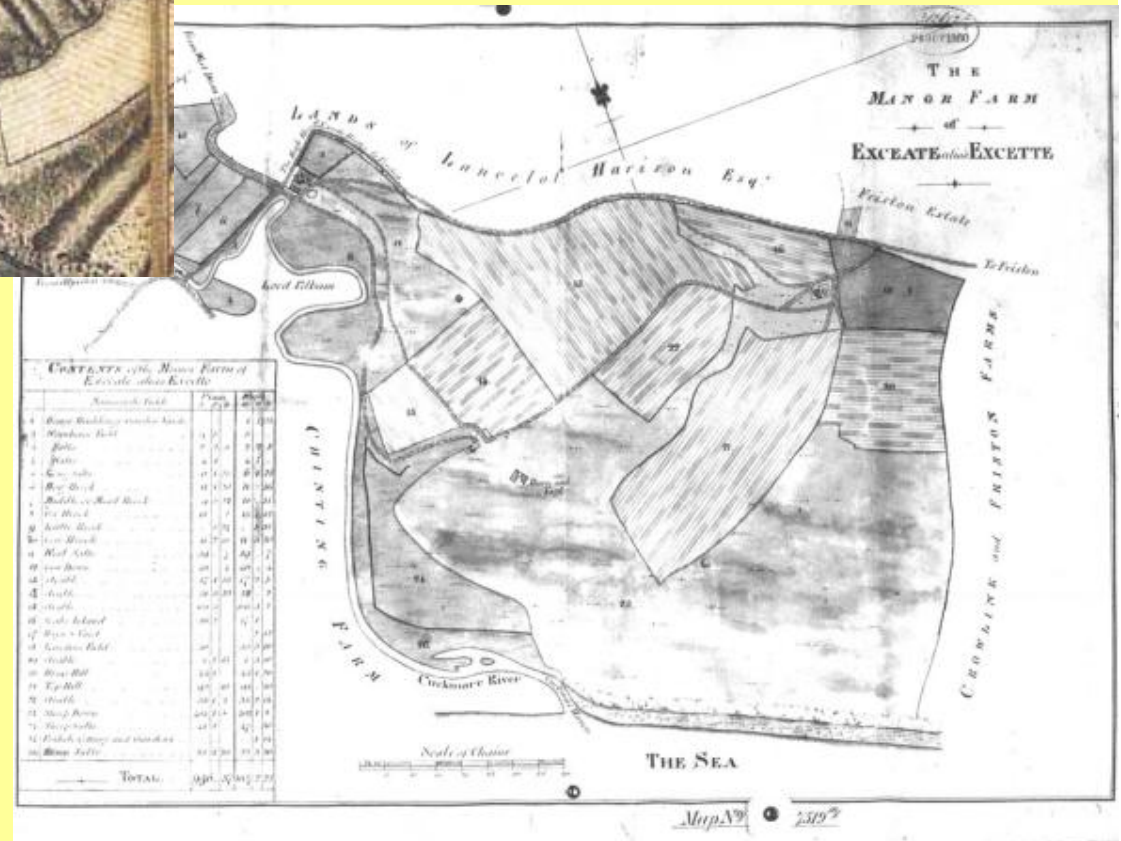


John De Ward 1618

Drainage and Reclamation - later sea wall



Yeakell and Gardner's Sussex 1778-83



The Manor Farm of 'Exceate 1860

Drainage and Reclamation - example of heritage asset



New Cut - 1846

Lines of vertical elm posts with interwoven rails

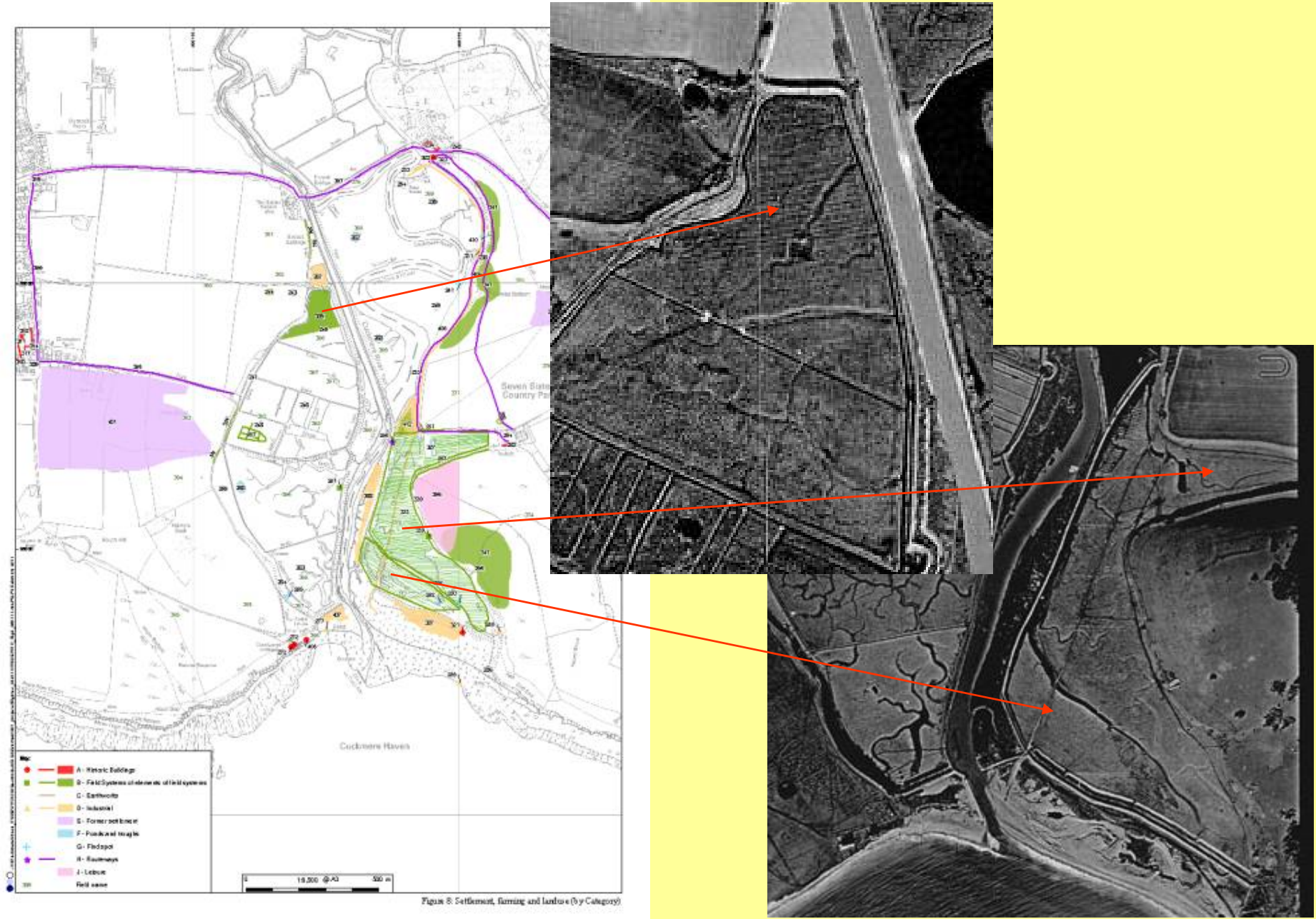
= Pole Moorings to slow water adjacent to embankments to prevent erosion of banks

Settlement Farming Landuse - Settlement



Figure 8: Settlement, farming and landuse (by Category)

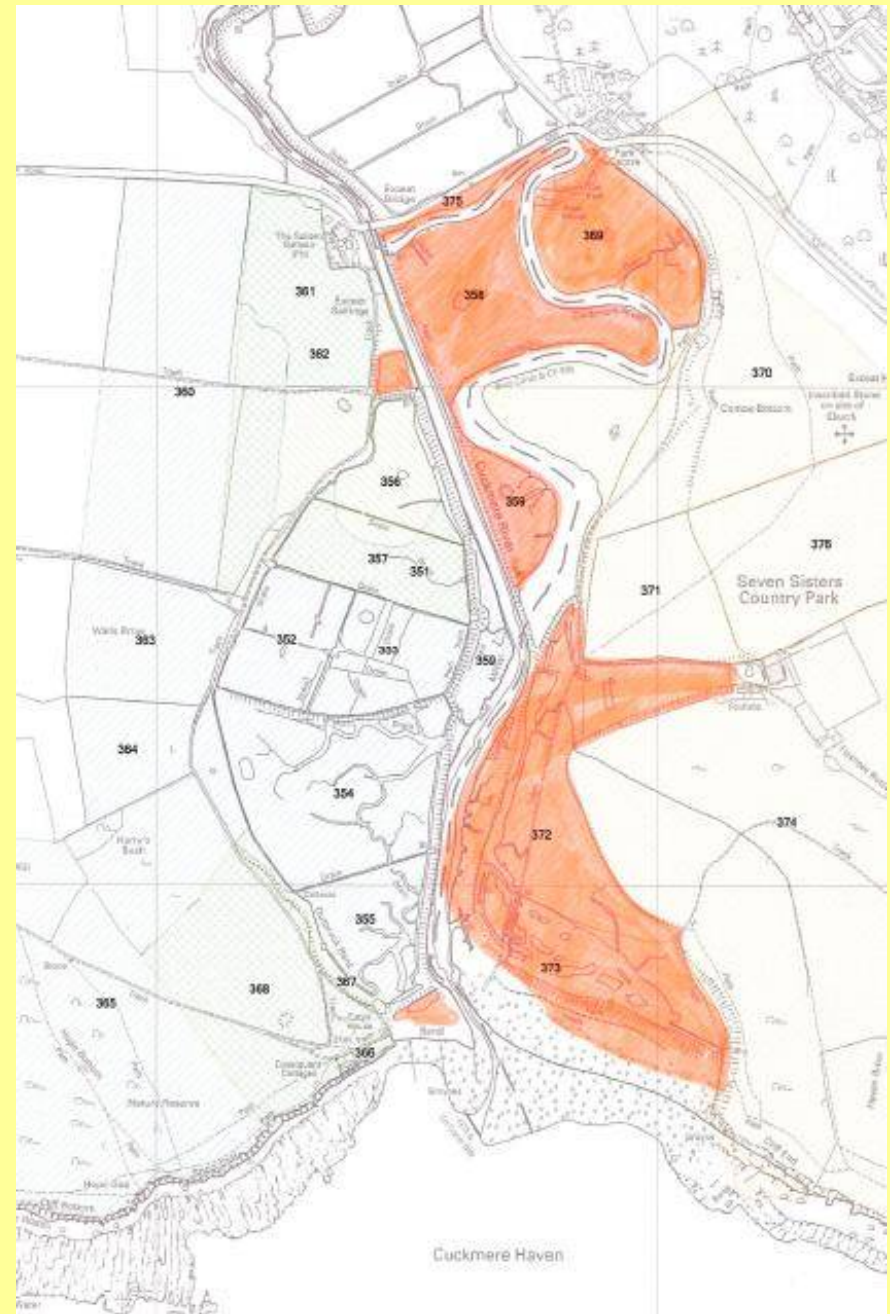
Settlement Farming Landuse - Farming



Settlement Farming Landuse - Salt



Figure 8: Settlement, Farming and Landuse (by Category)



Settlement Farming Landuse - Salt

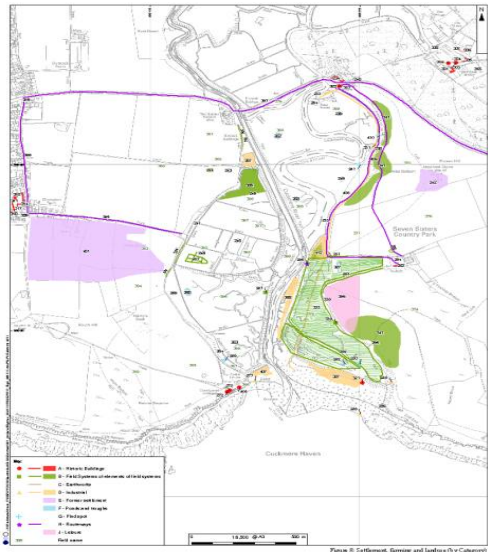
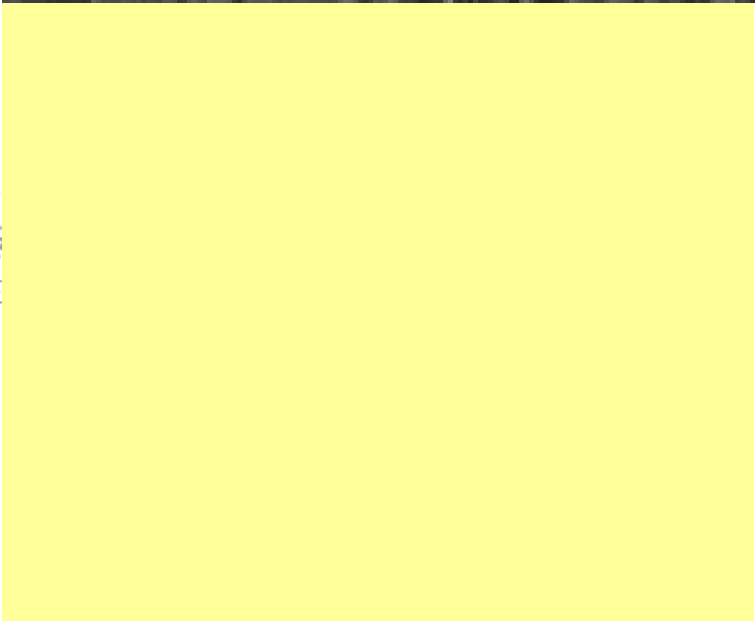
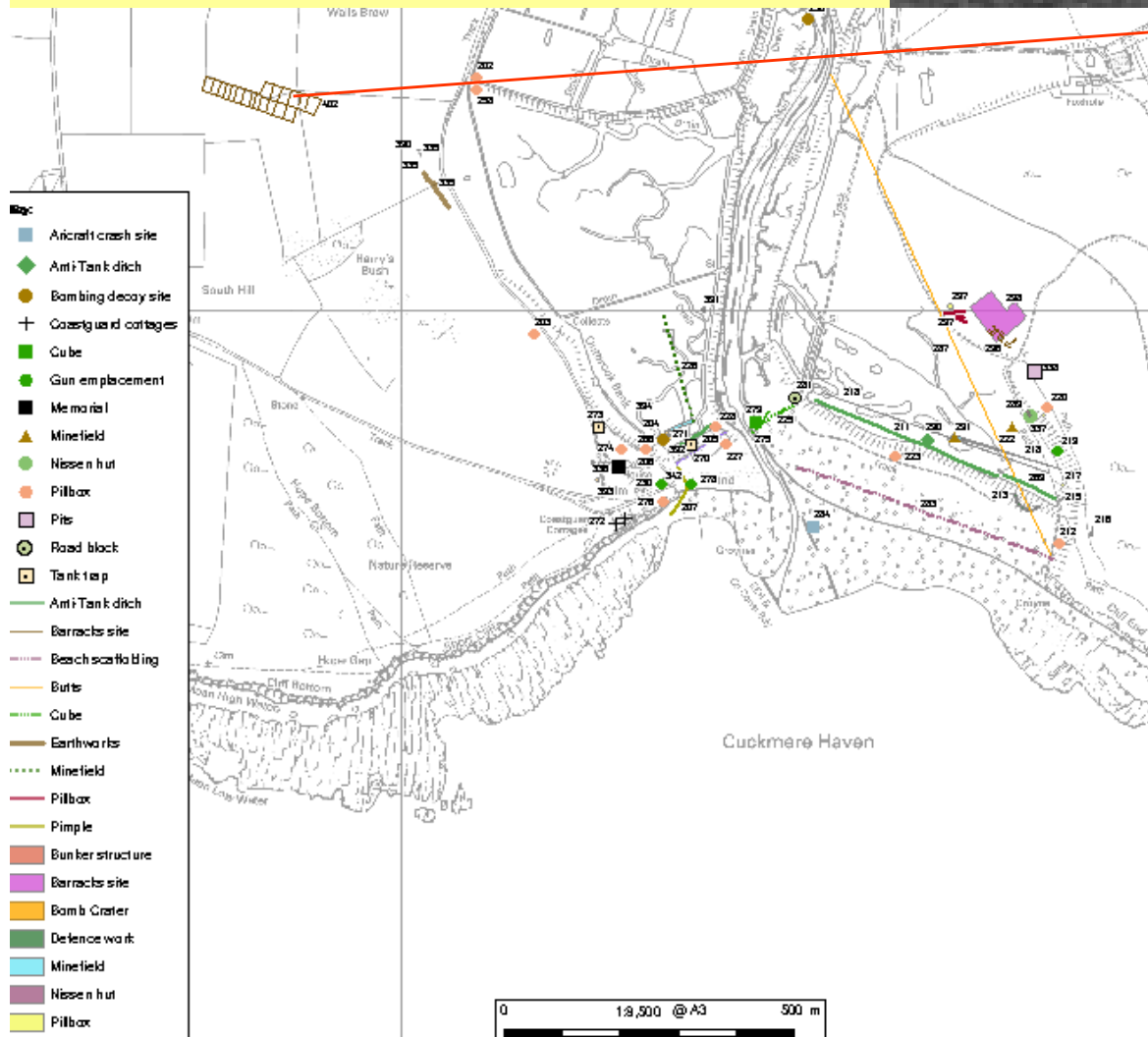


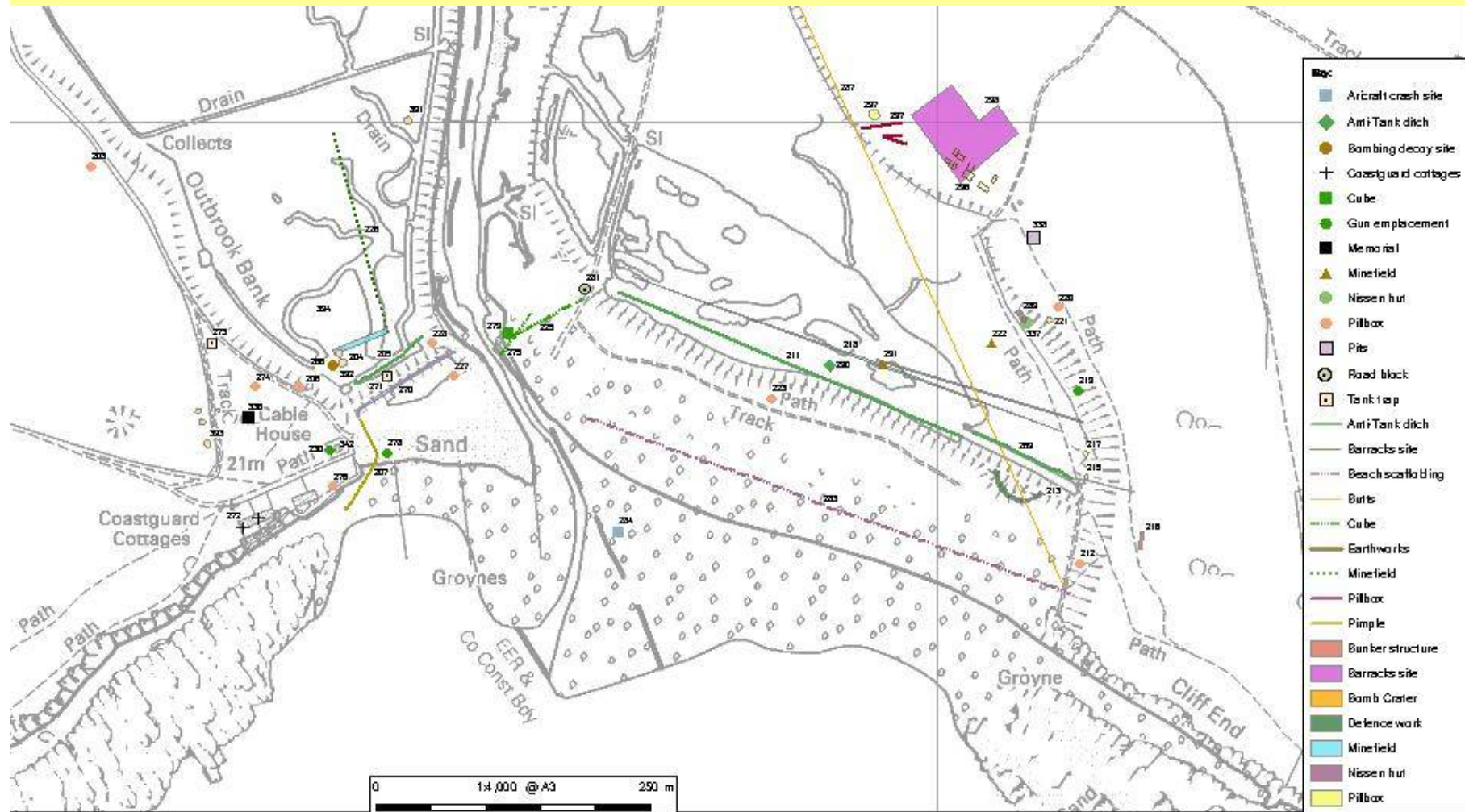
Figure 8: Settlement, Farming and Land Use (by Category)



Military and Defence - Pre-2nd World War



Military and Defence - 2nd World War



Defence of Britain Project - 'good eg of coastal anti-invasion defence ... important for its surviving combination of different types of coastal defence works... symbolism of this location, flanked by iconic white cliffs, spells out well the message of Britains defence'

Military and Defence - 2nd World War



Standard
25 Armco
Pillbox

20 anti-tank
cubes - with
graffiti



Coastguard
Cottages -
battle
headquarters,
loop-hole?

Non-
standard type
pillbox



Development of Significance Values

First Stage:

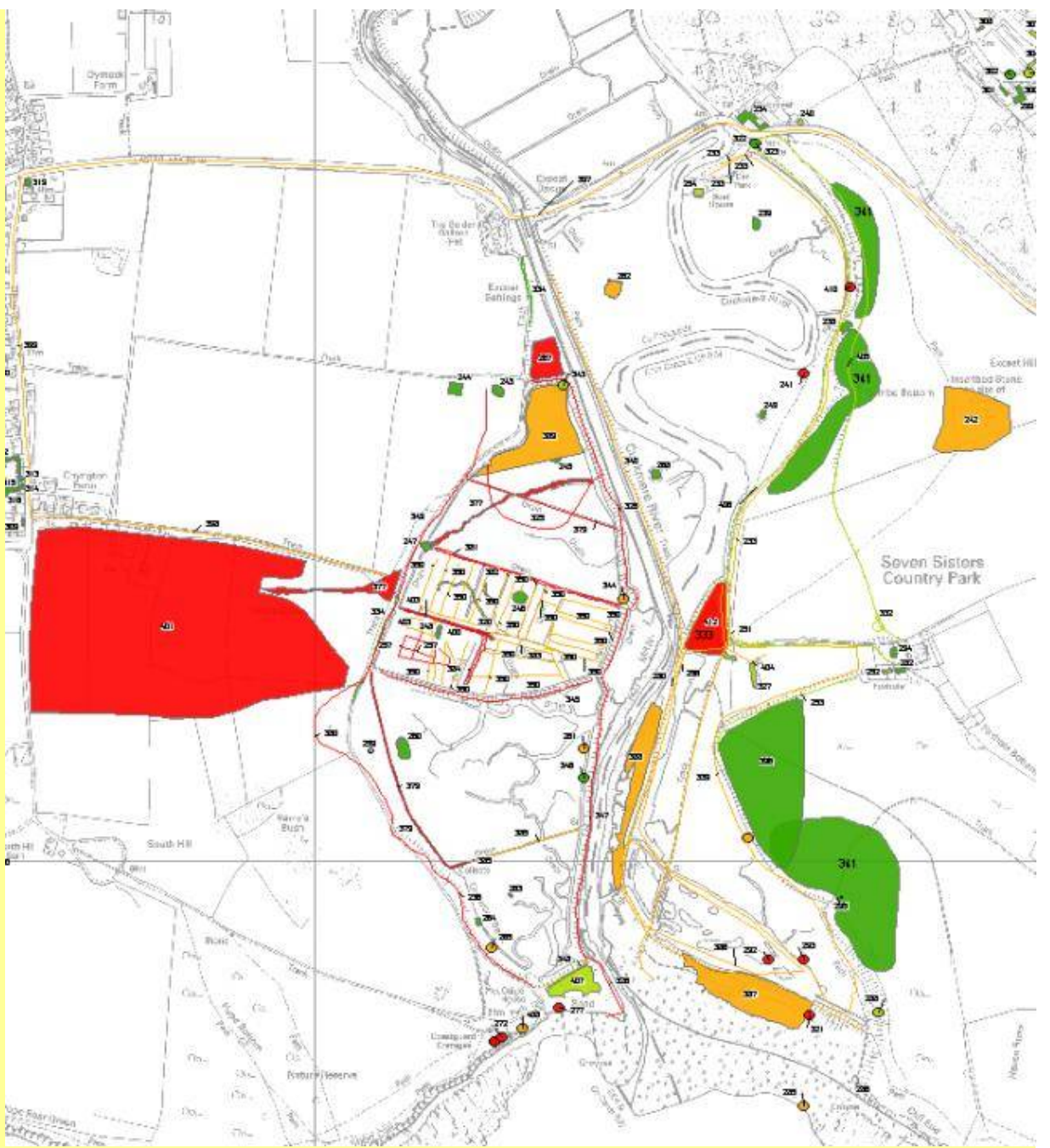
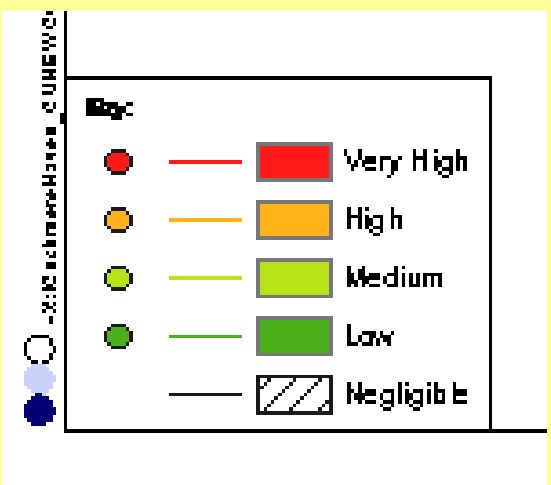
To score each individual feature for its importance within the themed category in which it has been placed (eg communications)

Reason - each category is made up of a number of individual heritage assets which in themselves tend to have a low value when scored using national criteria.

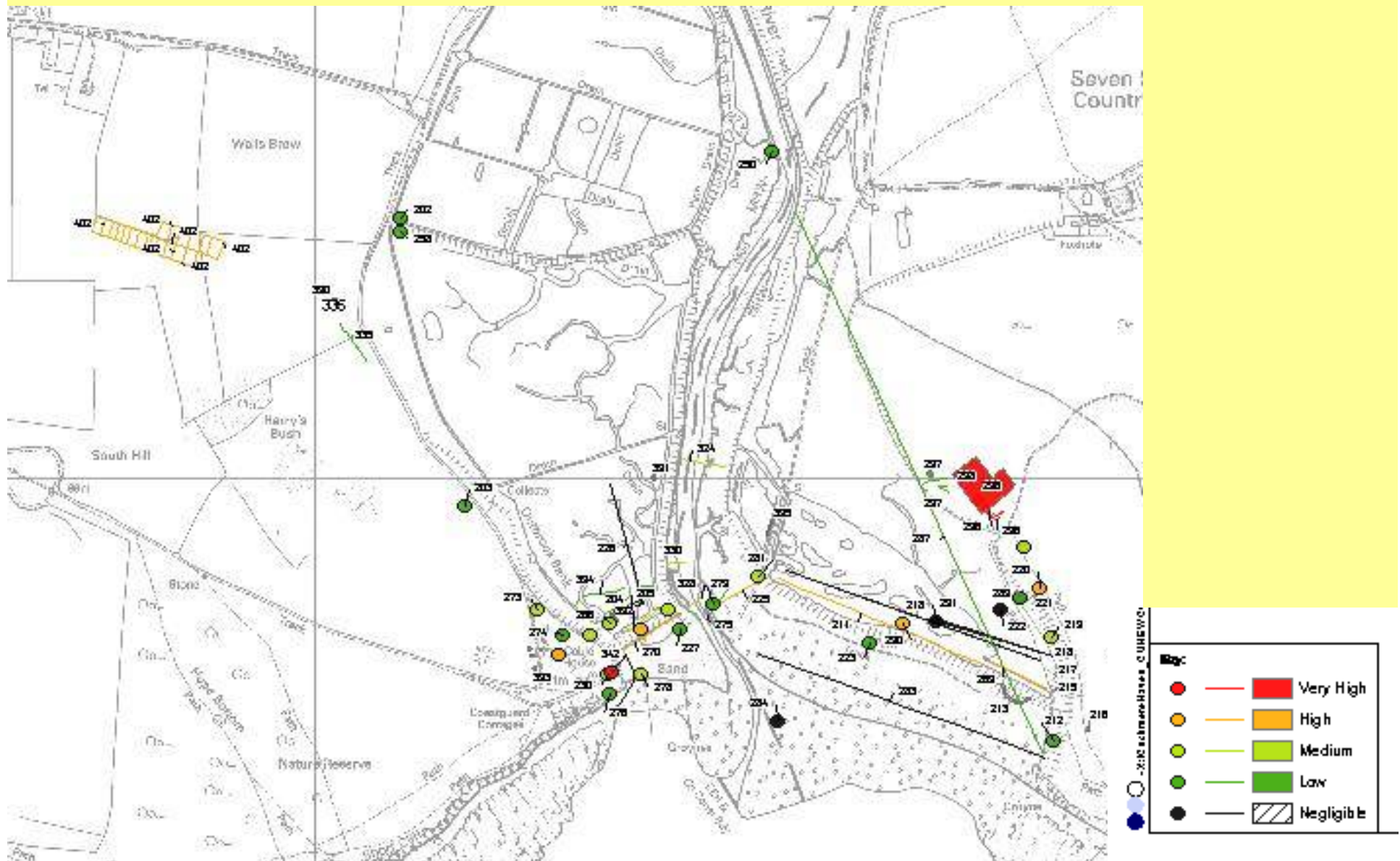
Second Stage:

To score each overall category using industry standard criteria judging Local, Regional, National and International Value

Relative Significance Rating for Drainage and Reclamation features and Settlement Farming and Landuse features.



Relative Significance Rating for Military and Defence and Communication Features



Overall significance of heritage assets within Valley

Based on the coherence and time-depth qualities of the historic landscape the overall historic landscape is considered to be of National Importance.

The historic building resource, including the upstanding military structures which dominate this group, is considered to be of National Importance.

The true archaeological potential is unknown and will always be unless considerable below ground investigation is undertaken, based on current knowledge and including the palaeo-archaeological resource, the archaeological resource is considered of National Importance.

Next Steps:

Modelling sea level change in relation to the heritage assets and their significance

Conduct further surveys as necessary

The End

